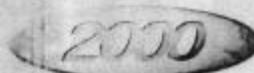


Cer D - ASHKELON
17/3/11

MASTERSIZER

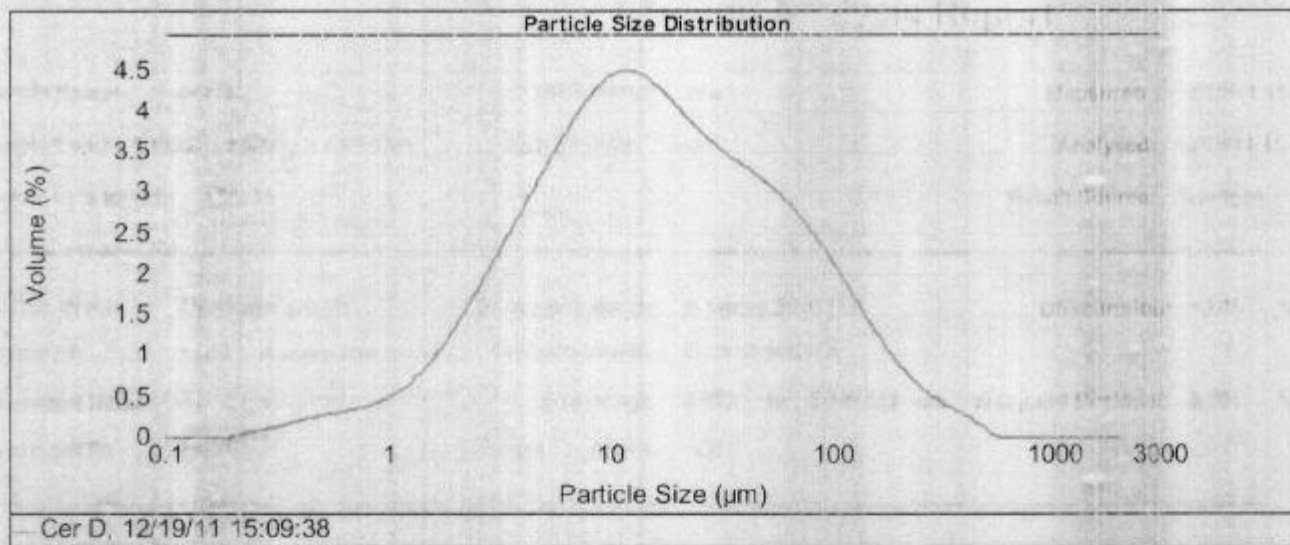


Result Analysis Report

Sample Name: Cer D SOP Name: ash Measured: 12/19/11 15:09:38
 Sample Source & type: Factory = Ashkelon Measured by: user Analysed: 12/19/11 15:09:39
 Sample bulk lot ref: 17/3/11 Result Source: Averaged

Particle Name: Aluminium silicate Accessory Name: Scirocco 2000 (A) Obscuration: 10.49 %
 Particle RI: 1.650 Absorption: 0.1 Analysis model: General purpose
 Dispersant Name: Size range: 0.020 to 2000.000 um Weighted Residual: 0.201 %
 Dispersant RI: 1.000 Result Emulation: Off

Concentration: 0.0019 %Vol Vol. Weighted Mean D[4,3]: 37.155 um Specific Surface Area: 0.96 m²/g
 Span: 6.053 Uniformity: 1.96 Surface Weighted Mean D[3,2]: 6.249 um
 Result units: Volume
 d(0.1): 2.866 um d(0.5): 15.458 um d(0.9): 96.442 um



Size (µm)	Volume In %	Size (µm)	Volume In %	Size (µm)	Volume In %	Size (µm)	Volume In %	Size (µm)	Volume In %	Size (µm)	Volume In %
0.020	0.00	0.142	0.00	1.002	0.39	7.096	3.05	50.238	2.31	355.656	0.23
0.022	0.00	0.159	0.00	1.125	0.45	7.962	3.18	56.368	2.21	393.052	0.16
0.025	0.00	0.178	0.00	1.262	0.54	8.934	3.29	63.246	2.10	447.744	0.10
0.028	0.00	0.200	0.01	1.416	0.65	10.024	3.35	70.963	1.98	502.77	0.01
0.032	0.00	0.224	0.04	1.589	0.78	11.247	3.37	79.621	1.85	533.677	0.00
0.036	0.00	0.252	0.06	1.783	0.92	12.619	3.35	89.337	1.70	632.456	0.00
0.040	0.00	0.283	0.08	2.000	1.08	14.159	3.30	100.237	1.54	739.627	0.00
0.045	0.00	0.317	0.10	2.244	1.25	15.867	3.21	112.468	1.38	795.214	0.00
0.050	0.00	0.356	0.13	2.518	1.43	17.825	3.10	126.191	1.21	873.967	0.00
0.056	0.00	0.399	0.16	2.825	1.61	20.000	2.99	141.589	1.04	1032.274	0.00
0.063	0.00	0.448	0.18	3.170	1.80	22.440	2.88	158.966	0.88	1124.683	0.00
0.071	0.00	0.502	0.20	3.557	1.98	25.179	2.78	179.250	0.74	1251.915	0.00
0.080	0.00	0.564	0.22	3.991	2.17	28.251	2.69	200.000	0.61	1415.892	0.00
0.089	0.00	0.632	0.24	4.477	2.36	31.698	2.61	224.404	0.50	1598.656	0.00
0.100	0.00	0.710	0.26	5.024	2.54	35.966	2.53	251.785	0.41	1732.602	0.00
0.112	0.00	0.796	0.29	5.637	2.72	39.905	2.46	282.508	0.34	2033.000	0.00
0.126	0.00	0.893	0.33	6.325	2.89	44.774	2.39	316.979	0.28		
0.142	0.00	1.002		7.096		50.238		355.656			

Operator notes: